



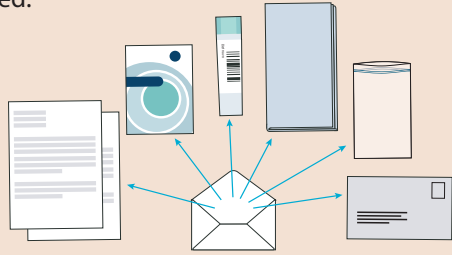
Instruction manual stool sample

For information in other languages, visit tarmscreening.no

1

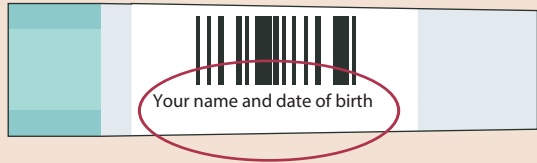
In this package, you should have received:

- a letter
- instructions
- a test tube
- stool catcher
- a small plastic bag with closure
- a return envelope



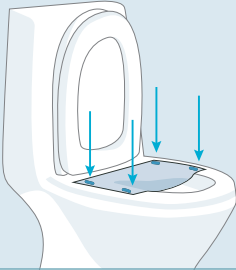
2

Make sure your name and date of birth are printed on the tube. If the information does not match, do not take the test; contact us to receive a new test tube.



3

Fasten the corners on the stool catcher directly to the toilet bowl.



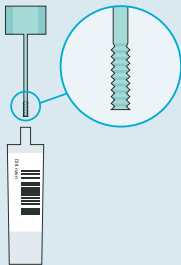
The stool catcher is ready to use. Avoid getting urine on it.

4

If the stool catcher tears, you can use a clean container (such as a plastic box) that you place in the toilet.



5



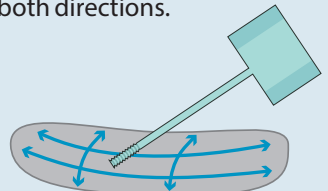
Twist the green lid to open the tube.

Do not pour out the liquid in the tube.

Collect the sample with the stick attached to the lid.

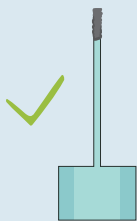
6

Guide the stick over the surface of the stool in both directions.

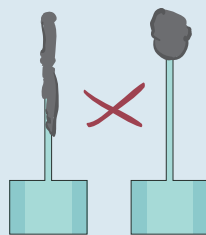


7

Only the grooves on the stick should be covered with stool. Be careful not to get too much stool on the stick.



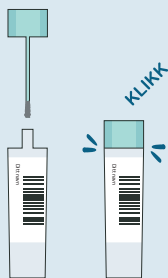
right amount



too much

8

Put the stick back into the tube and turn the lid until you hear a click.



9



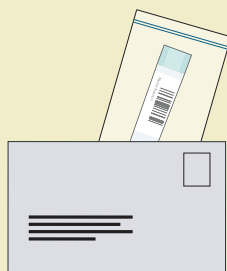
Detach the paper from the toilet bowl and flush it down; flush 2 or 3 times. The paper will disintegrate.

10



Place the tube in the plastic bag. Make sure the seal is closed properly.

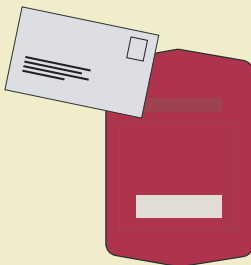
Place the bag with the tube in the enclosed envelope. Postage is prepaid.



11

The test should be sent back in the return envelope on the same day as the sample is collected.

If this is not possible, store the sample in the refrigerator until you can send it.



12

The sample is analyzed for blood.

You will receive a reply from us regardless of the result.

